



Sheringham Shoal and Dudgeon Offshore Wind Farm Extension Projects

Historic Environment Plan (Onshore) (Revision B)

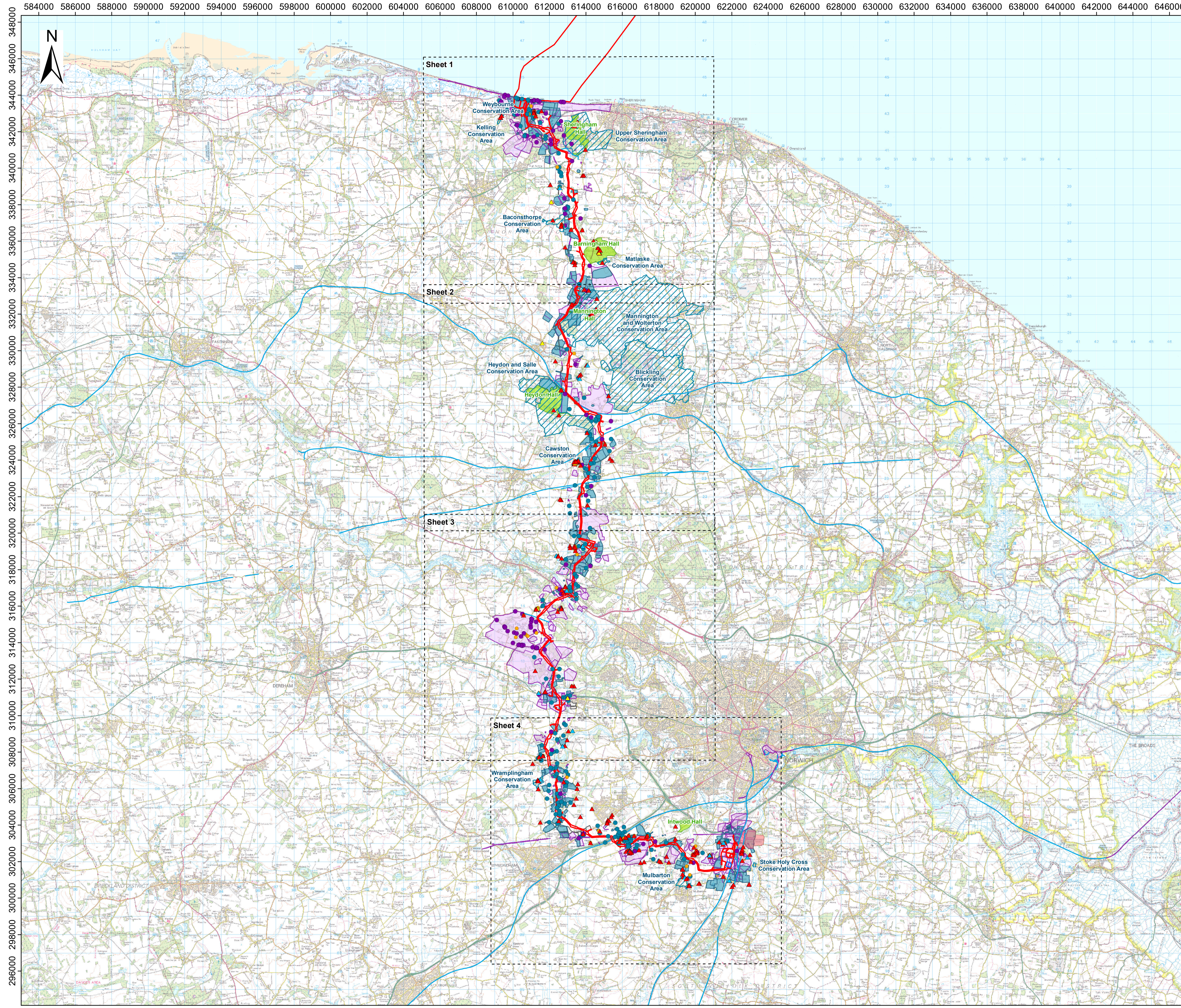
Revision B

Deadline 3

May 2023

Document Reference: 2.13

APFP Regulation: 5(2)(m)



Sheringham Shoal and Dudgeon Extension Projects

Title:
Plan of Statutory / Non-statutory Historic or Scheduled Monument Sites / Features of the Historic Environment Plan (Onshore) Key Plan

APFP Regulations Reference: 5(2)(m)
Application Doc. no.: 2.13

- Legend:**
- Order Limits
 - Onshore Substation Site
 - Sheet Boundary
 - Scheduled Monument
 - Conservation Area
 - Registered Park and Garden
 - Listed Building**
 - ▲ Grade I
 - ▲ Grade II
 - ▲ Grade II*
 - Historic Environment Record (point)**
 - Building
 - Find Spot
 - Monument
 - Historic Environment Record (line)**
 - Monument
 - Historic Environment Record (polygon)**
 - Building
 - Find Spot
 - Negative evidence
 - Place
 - Monument

Data Sources: © Historic England, 2021; © Norfolk County Council, 2021
Base Map: © Crown copyright and database rights 2020, Ordnance Survey 0100031673; © OpenStreetMap (and) contributors, CC-BY-SA
Contains OS data © Crown Copyright and database right 2020



Coordinate Reference System: British National Grid
Transformation WGS84: OSGB_1936_To_WGS_1984_7

0 1 2 3 4 5 6 7 8 9 10 11 Kilometres

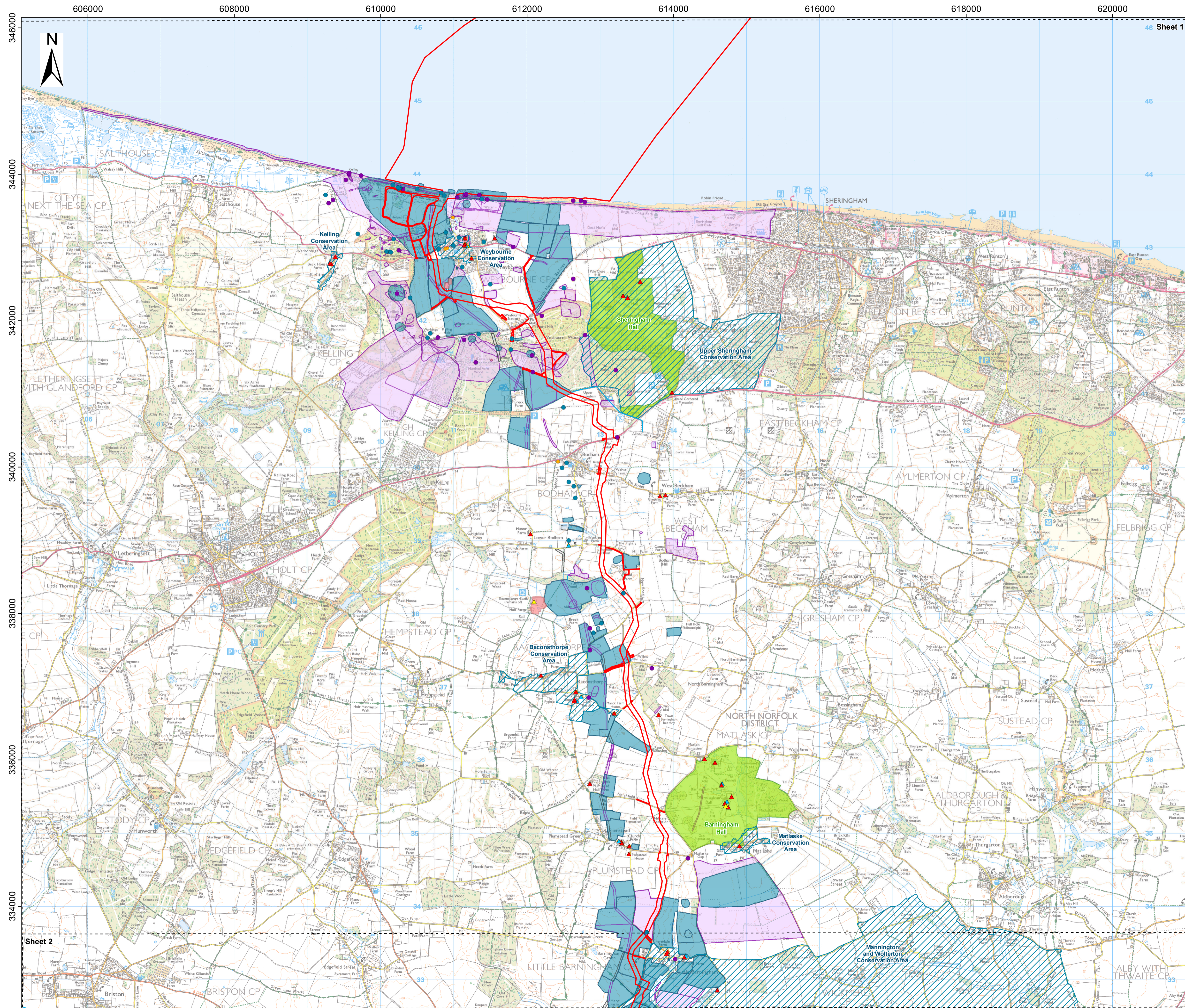
0 1 2 3 4 5 6 7 8 Miles

Scale: 1:100,000 Scale at size: A1

Equinor Doc. no.: C282-RH-Z-GA-00005

C	05/04/2023	Third Issue Updated issue – material change	DE	JA	SM
B	18/08/2022	Second Issue	GC	JA	SM
A	01/04/2022	First Issue	AZ	JA	SM
REV	DATE	STATUS	DRW	CHK	APR





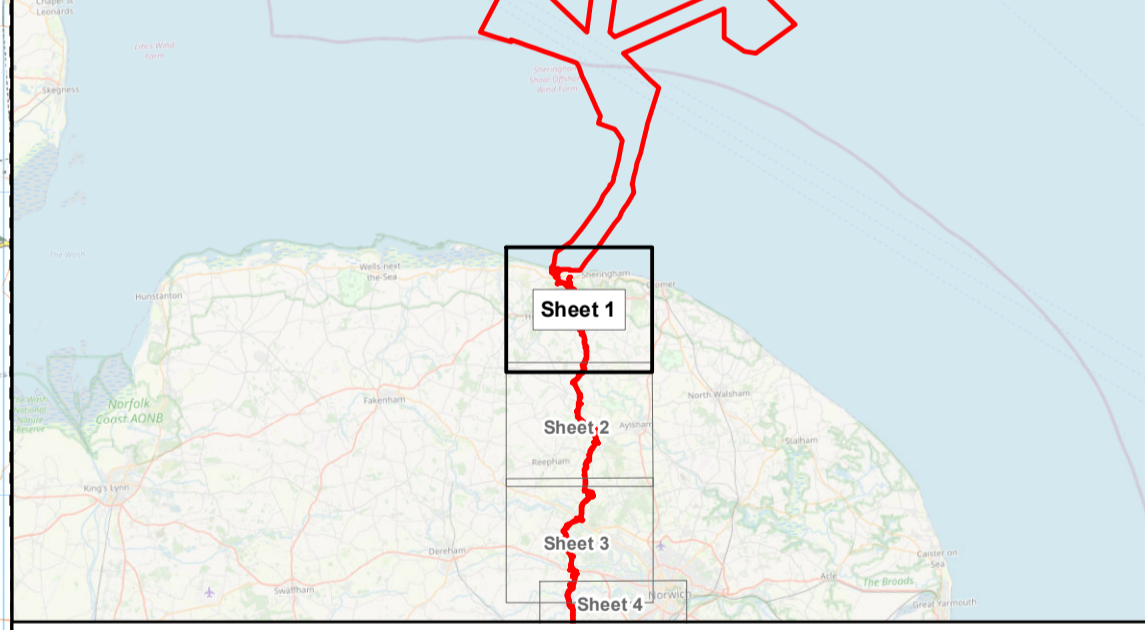
Sheringham Shoal and Dudgeon Extension Projects

Title:
Plan of Statutory / Non-statutory Historic or Scheduled Monument Sites / Features of the Historic Environment Plan (Onshore)
Sheet 1 of 4

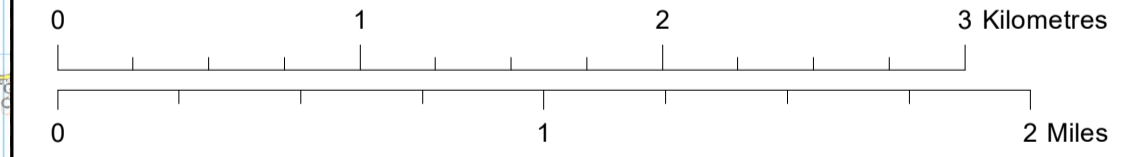
APFP Regulations Reference: 5(2)(m)
Application Doc. no.: 2.13

- Legend:**
- Order Limits
 - Scheduled Monument
 - Conservation Area
 - Registered Park and Garden
 - ▲ Grade I
 - ▲ Grade II
 - ▲ Grade II*
 - Building
 - Find Spot
 - Monument
 - Historic Environment Record (line) Monument
 - Historic Environment Record (polygon) Building
 - Find Spot
 - Negative evidence
 - Monument

Data Sources: © Historic England, 2021; © Norfolk County Council, 2021
Base Map: © Crown copyright and database rights 2020, Ordnance Survey 0100031673; © OpenStreetMap (and) contributors, CC-BY-SA
Contains OS data © Crown Copyright and database right 2020



Coordinate Reference System: British National Grid
Transformation WGS84: OSGB_1936_To_WGS_1984_7

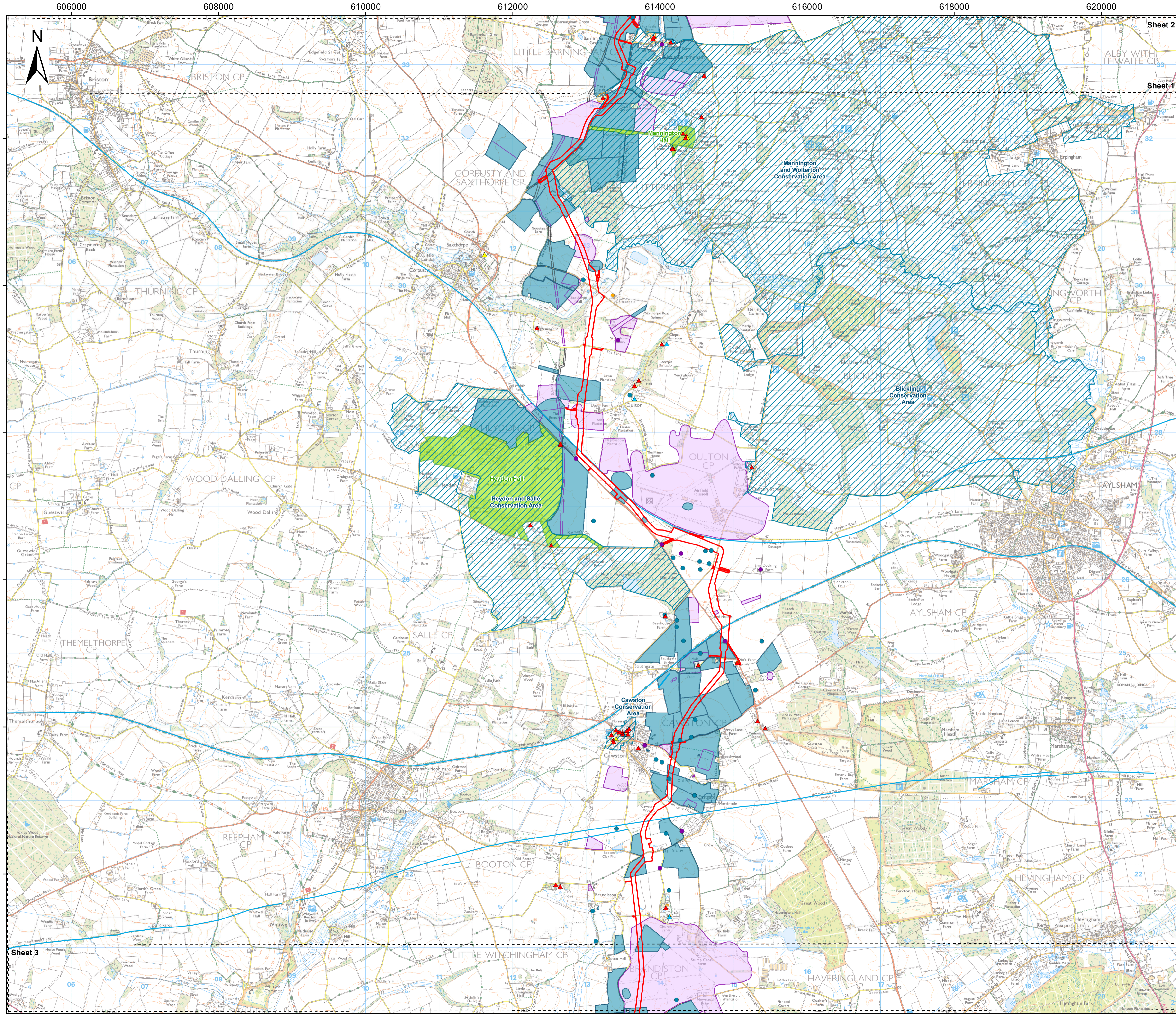


Scale: 1:25,000 Scale at size: A1

Equinor Doc. no.: C282-RH-Z-GA-00005

REV	DATE	STATUS	DRW	CHK	APR
C	05/04/2023	Third Issue Updated issue – material change	DE	JA	SM
B	18/08/2022	Second Issue	GC	JA	SM
A	01/04/2022	First Issue	AZ	JA	SM





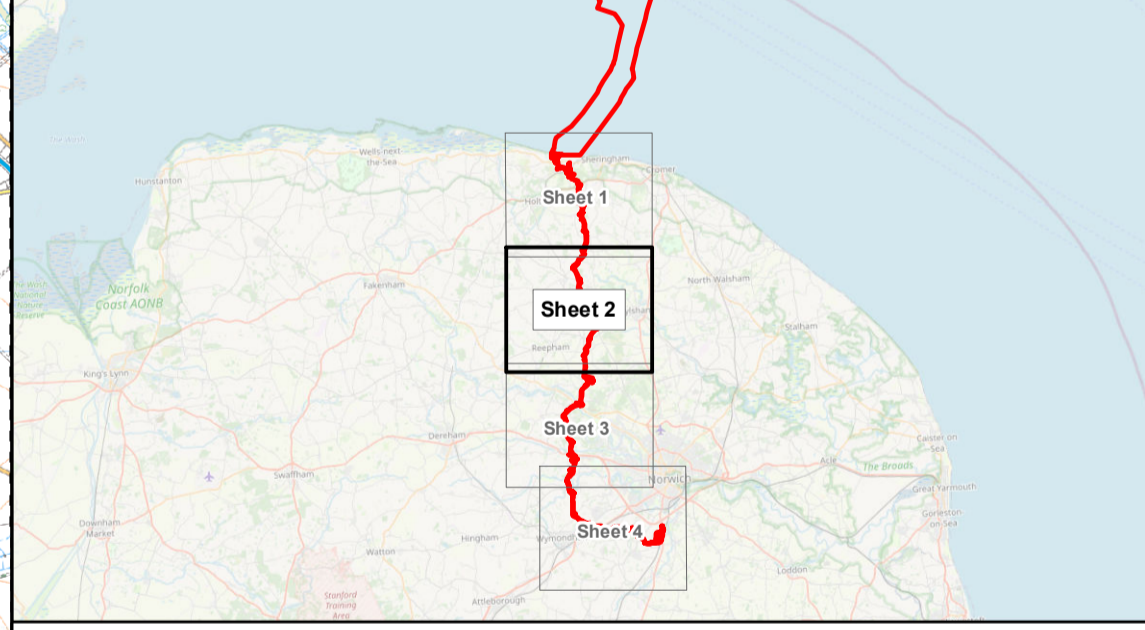
Sheringham Shoal and Dudgeon Extension Projects

Title: Plan of Statutory / Non-statutory Historic or Scheduled Monument Sites / Features of the Historic Environment Plan (Onshore)
Sheet 2 of 4

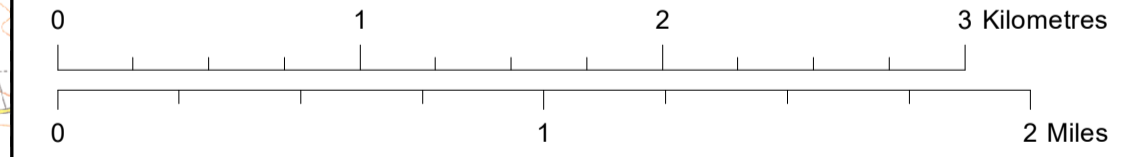
APFP Regulations Reference: 5(2)(m)
Application Doc. no.: 2.13

- Legend:**
- Order Limits
 - Scheduled Monument
 - Conservation Area
 - Registered Park and Garden
 - ▲ Grade I
 - ▲ Grade II
 - ▲ Grade II*
 - Building
 - Find Spot
 - Monument
 - Historic Environment Record (line) Monument
 - Historic Environment Record (polygon) Building
 - Find Spot
 - Negative evidence
 - Monument

Data Sources: © Historic England, 2021; © Norfolk County Council, 2021
Base Map: © Crown copyright and database rights 2020, Ordnance Survey 0100031673; © OpenStreetMap (and) contributors, CC-BY-SA
Contains OS data © Crown Copyright and database right 2020



Coordinate Reference System: British National Grid
Transformation WGS84: OSGB_1936_To_WGS_1984_7

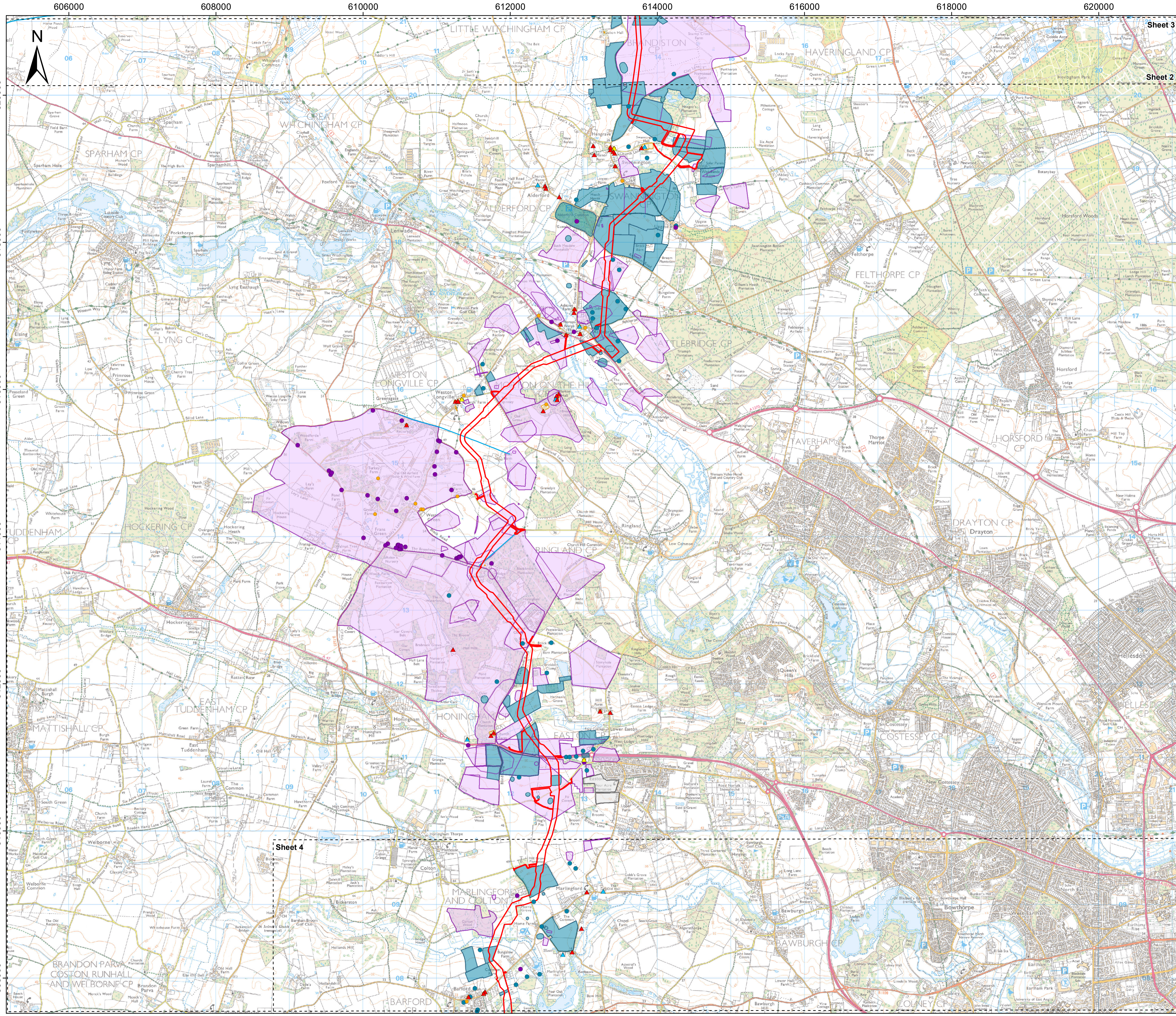


Scale: 1:25,000 Scale at size: A1

Equinor Doc. no.: C282-RH-Z-GA-00005

C	05/04/2023	Third Issue Updated issue – material change	DE	JA	SM
B	18/08/2022	Second Issue	GC	JA	SM
A	01/04/2022	First Issue	AZ	JA	SM
REV	DATE	STATUS	DRW	CHK	APR





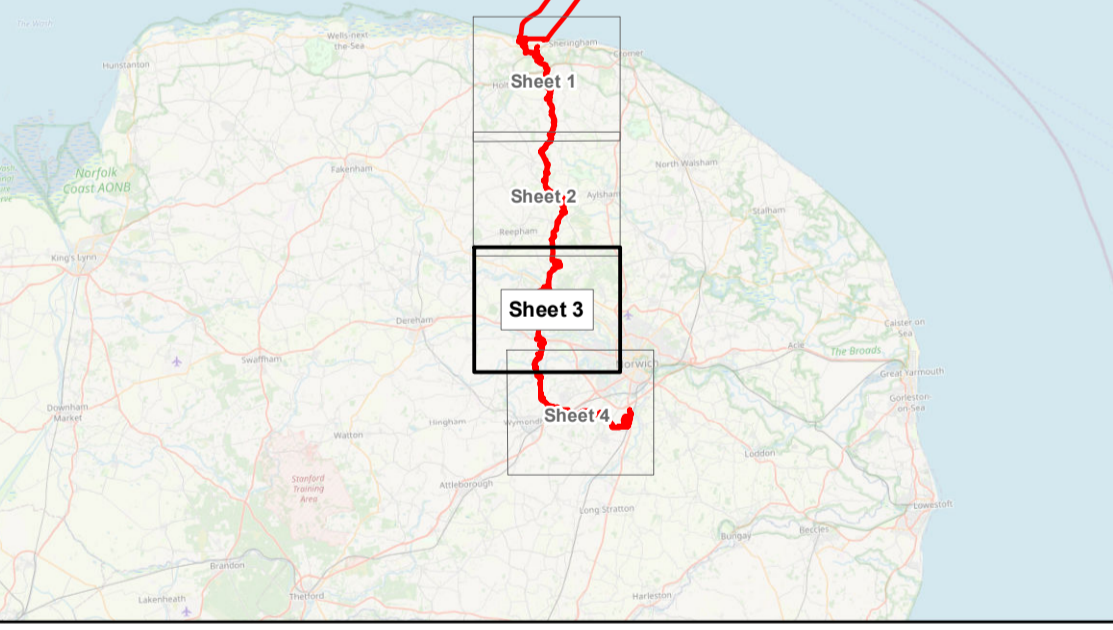
Sheringham Shoal and Dudgeon Extension Projects

Title:
Plan of Statutory / Non-statutory Historic
or Scheduled Monument Sites / Features
of the Historic Environment Plan (Onshore)
Sheet 3 of 4

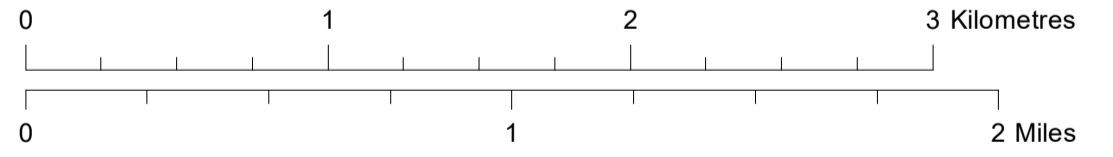
APFP Regulations Reference: 5(2)(m)
Application Doc. no.: 2.13

- Legend:**
- Order Limits
 - Scheduled Monument
 - ▲ Grade I
 - ▲ Grade II
 - ▲ Grade II*
 - Building
 - Find Spot
 - Monument
 - Historic Environment Record (line) Monument
 - Historic Environment Record (polygon) Building
 - Find Spot
 - Negative evidence
 - Monument

Data Sources: © Historic England, 2021; © Norfolk County Council, 2021
Base Map: © Crown copyright and database rights 2020, Ordnance Survey 0100031673; © OpenStreetMap (and) contributors, CC-BY-SA
Contains OS data © Crown Copyright and database right 2020



Coordinate Reference System: British National Grid
Transformation WGS84: OSGB_1936_To_WGS_1984_7

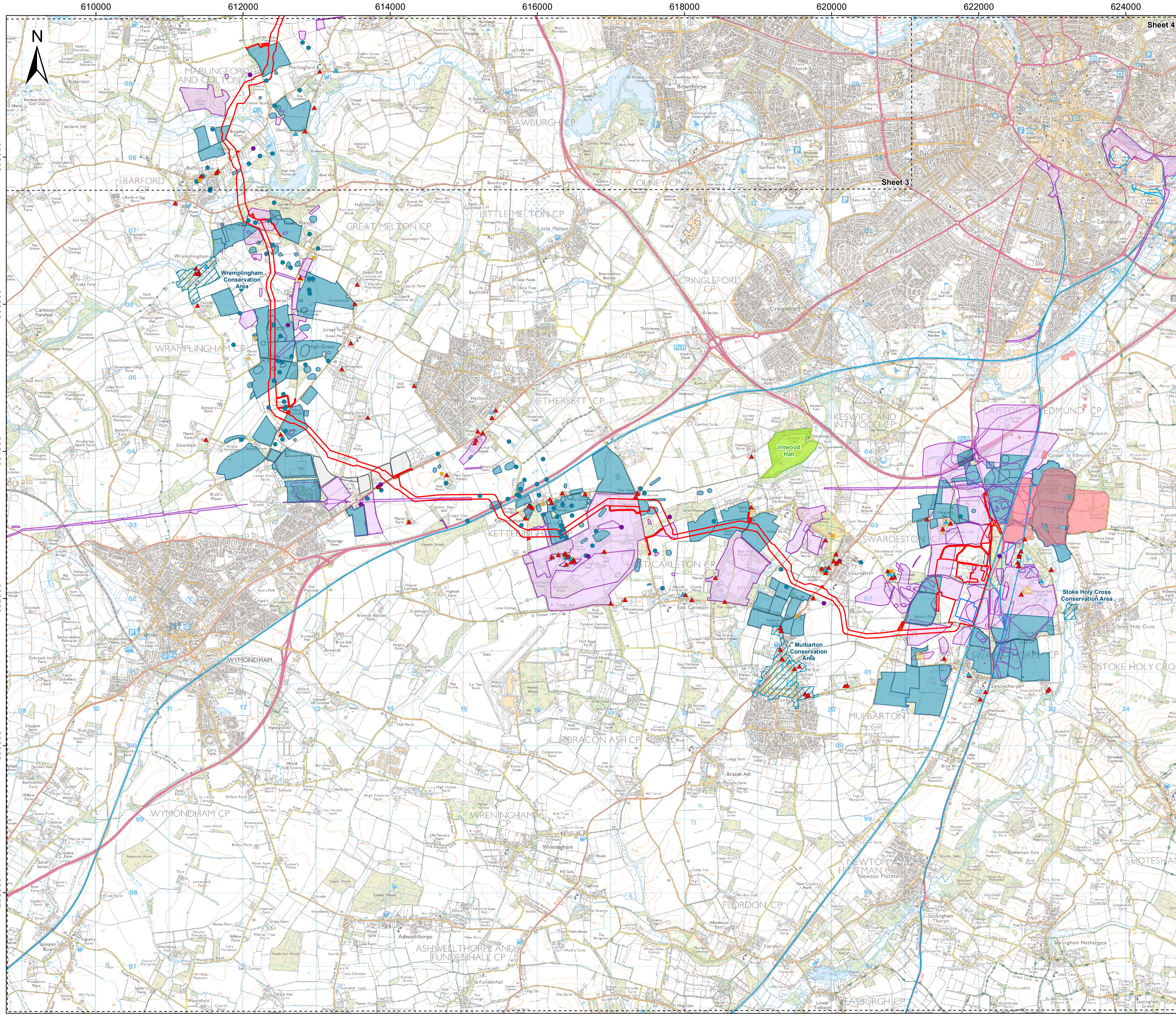


Scale: 1:25,000 Scale at size: A1

Equinor Doc. no.: C282-RH-Z-GA-00005

REV	DATE	STATUS	DRW	CHK	APR
C	05/04/2023	Third Issue Updated issue – material change	DE	JA	SM
B	18/08/2022	Second Issue	GC	JA	SM
A	01/04/2022	First Issue	AZ	JA	SM





Sheringham Shoal and Dudgeon Extension Projects

Title:
Plan of Statutory / Non-statutory Historic or Scheduled Monument Sites / Features of the Historic Environment Plan (Onshore)
Sheet 4 of 4

APFP Regulations Reference: 5(2)(m)
Application Doc. no.: 2.13

Legend:

- Order Limits
- Onshore Substation Site
- Scheduled Monument
- Conservation Area
- Registered Park and Garden
- Listed Building
 - ▲ Grade II
 - ▲ Grade II*
- Building
- Find Spot
- Monument

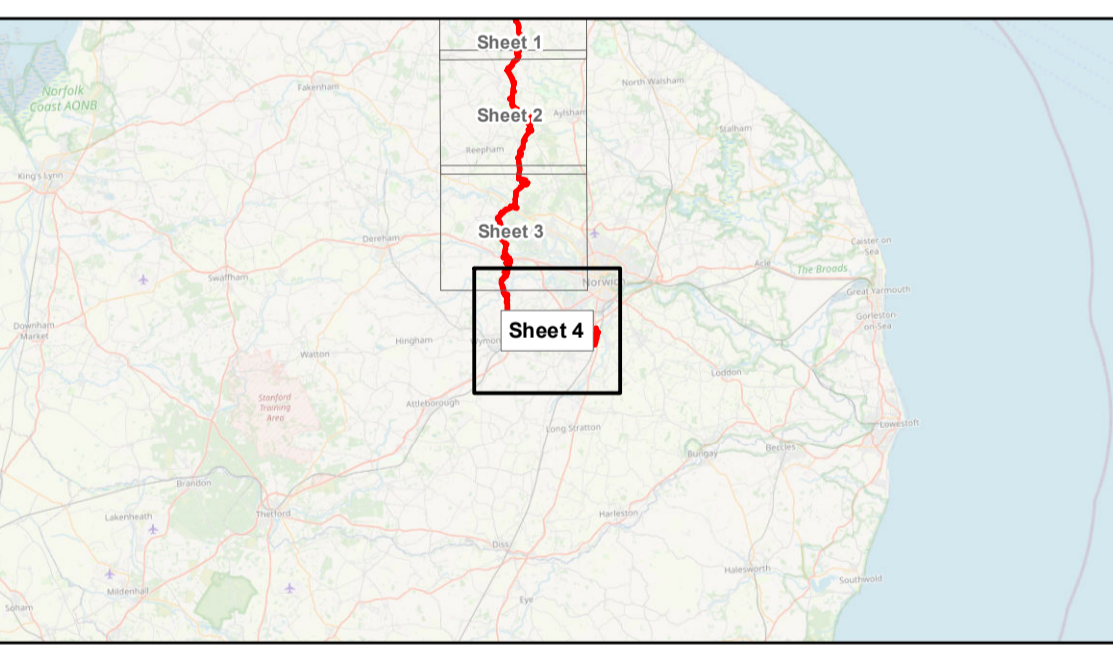
Historic Environment Record (line)

- Monument

Historic Environment Record (polygon)

- Building
- Find Spot
- Negative evidence
- Place
- Monument

Data Sources: © Historic England, 2021; © Norfolk County Council, 2021
Base Map: © Crown copyright and database rights 2020, Ordnance Survey 0100031673; © OpenStreetMap (and) contributors, CC-BY-SA
Contains OS data © Crown Copyright and database right 2020



Coordinate Reference System: British National Grid
Transformation WGS84: OSGB_1936_To_WGS_1984_7

Scale: 1:25,000 Scale at size: A1
Equinor Doc. no.: C282-RH-Z-GA-00005

REV	DATE	STATUS	DRW	CHK	APR
C	05/04/2023	Third Issue Updated issue – material change	DE	JA	SM
B	18/08/2022	Second Issue	GC	JA	SM
A	01/04/2022	First Issue	AZ	JA	SM

